



RESIDENTIAL ESTATE AGENTS
PROPERTY LETTING & MANAGING AGENTS
VALUERS & PROPERTY CONSULTANTS
CHARTERED SURVEYORS

01722 336422
www.hwwhite.co.uk WEB



St. Marks Avenue,

£1,350 PCM

8, Atherton Court St. Marks Avenue, Salisbury, Wiltshire, SP1 3UF



Energy Efficiency Rating		
	Current	Potential
Very energy efficient - lower running costs		
(92 plus) A		
(81-91) B		
(69-80) C	74	74
(55-68) D		
(39-54) E		
(21-38) F		
(1-20) G		
Not energy efficient - higher running costs		
England & Wales	EU Directive 2002/91/EC	

Accommodation comprises :-
 Entrance hallway, spacious living room with feature fireplace and gas fire, French doors onto the balcony. Modern kitchen/diner with granite work surfaces, ceramic hob, electric oven and integrated appliances; space for a small table.
 Principal bedroom with a range of fitted wardrobes and en suite shower room. Bedroom two, double. L-Shaped Bedroom three/study. Bathroom with shower over bath.
 Communal gardens. Single garage and allocated parking space. Entry phone system and lift.
 With regret the lease does not allow for children, sharers or pets.

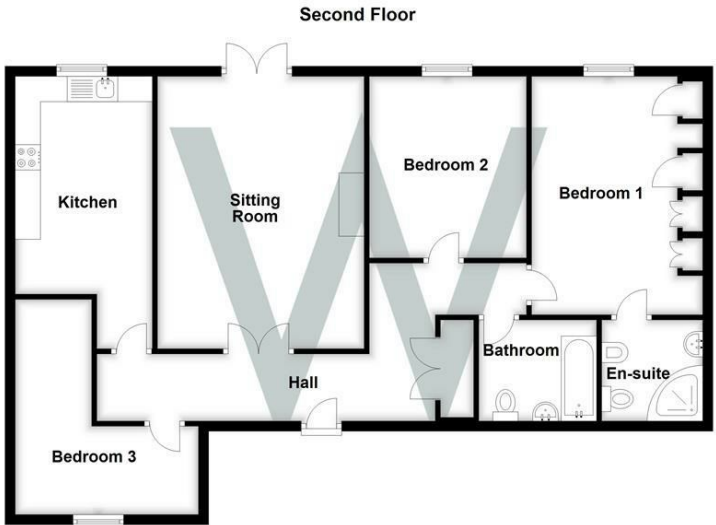
A Note From the Whites Letting Team
 Thank you for considering Whites as your letting agent. As a proud member of the Royal Institution of Chartered Surveyors (RICS), we aspire to uphold its core values by providing a fair, efficient, and transparent service for all prospective tenants. Below we've outlined how we manage property enquiries and applications to help set expectations and guide you through the letting application process.

To begin the process of enquiring about one of our properties, please click the 'Request Further Details/Info' button on the property listing. This will send us your contact information, and we'll get back to you as soon as possible with a short questionnaire to complete. Once we've received your completed questionnaire, your enquiry will be registered with the relevant Property Manager. Please note. only those who complete this step will be considered as having formally enquired about the property.

Due to the high level of interest we often receive, we may receive more enquiries than we can handle. To manage expectations, we may also temporarily pause viewings. We will handle enquiries in the order they are received and arrange viewings in groups of up to 4. To manage expectations, we may also temporarily pause viewings accordingly.

Please note that applications are not decided on its merits by us, in conjunction with the landlord. All applications will be carefully considered.

The availability date listed is provisional and w



01722 336422